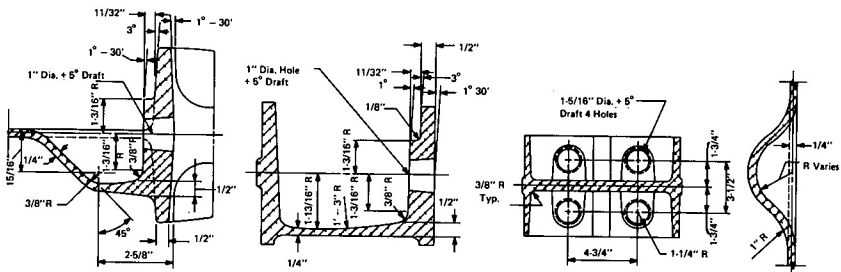


SIDE ELEVATION

FRONT ELEVATION



SECTION C-C

SECTION E-E

SECTION F-F SECTION G-G

### SPECIFICATIONS

Cast aluminum posts shall conform to the requirements of AASHTO M193-77, or latest revision, and to the requirements of A.S.T.M. B108, alloy A444-T4.

Dimensional tolerances not shown or implied are intended to be those consistent with the proper functioning of the part, including its appearance and accepted manufacturing practices.

### INTENDED USE

This post is used to support rail elements in bridge railing design BR2 (Aluminum) Type A.

Note: This standard is intended to establish rail center(s), relative location of anchor bolt holes, and post silhouette dimensions to insure interchangeability of posts from different foundries. All other dimensions are approximate and may be adjusted to meet the strength requirements of the AASHTO bridge specifications.

### BR2 (ALUMINUM) TYPE A CAST POST

HM-TF-13

STANDARD

P-30-73